

 **HORSCH**

Serto SC

SOLO SEED DRILL FOR HIGHEST WORK RATES





Serto SC

LARGE WORKING WIDTH – LOW HORSEPOWER REQUIREMENT
DUE TO SEPARATE SEEDBED PREPARATION AND SEEDING

- Compact design: from 10 m working width folded to 3 m transport width
- PowerDisc seed coultter with a release force of up to 200 kg per seed coultter or TurboDisc seed coultter with a release force of up to 125 kg per seed coultter
- The offset seeding method – tillage and seeding are separated – allows for new seed windows especially in years with a lot of rain
- Double hopper with a capacity of 6 000 l + microgranular compound unit



The hopper capacity of the Serto amounts to a total of 6 000 l with a 60:40 partition. Thus, either 6 000 l of seed can be applied, or seed and fertiliser can be combined with a tank partition of 3 600 l in the front and 2 400 l in the rear. As an option, there is a 300 l hopper for microgranular compound as a third component. Track eradicator tines or wavy disc track eradicators are available to loosen the tractor tracks efficiently. The undulated discs arranged in pairs are ideal especially on heavy soils as no rough structures are broken from the seedbed and the tolerance for harvest residues is particularly high. The machine is folded to 3 m transport width at the push of a button.

Even on light soils the horsepower requirement is absolutely low due to the continuous packer – this saves fuel. The narrow seed hopper allows for an easy accessibility of all components and for a perfect view on the machine and the field.



Safe maintenance of the set placement depth across the whole working width due to hydraulic weight transfer of the seed wagon weight to the coulter wings



Quick and easy folding options

Tyre packer with AS profil

RUGGED, EFFICIENT, LOW HORSEPOWER REQUIREMENT



Targeted and even levelling and consolidation in front of each seed coulters

The HORSCH tyre packer ensures a targeted and even levelling and consolidation in front of every seed coulters. The tyres are arranged in one line. Thus, clearance is optimum even on light soils. The straight tyre profile inc eases consolidation in the boundary area. The 10-ply special HORSCH tyres ensure a long service life.

An efficient consolidation below the seed horizon guarantee a better water distribution towards the seeds. The horsepower requirement is low due to large tyre diameter and no scrapers are required.

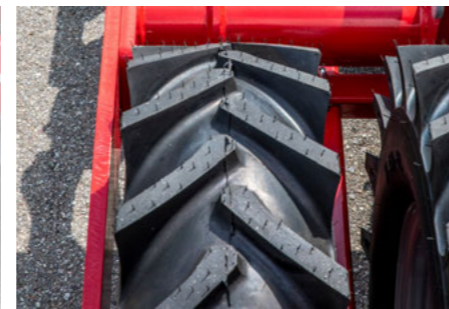
- Targeted and even levelling and consolidation in front of each seed coulters
- Straight tyre profile inc eases consolidation in the consolidation area
- Efficient consolidation below the seed horizon for better water distribution towards the seeds
- Low horsepower requirement due to large tyre diameter and no scrapers required



Serto SC while sowing wheat after shallow tillage



Low horsepower requirement due to large tyre diameter and no scrapers required



Straight tyre profile inc eases consolidation in the consolidation area

Track eradicator tines or track eradicator discs

LOOSEN THE SOIL OF THE TRACTOR TRACK

The spring-loaded track eradicator tines allow for loosening the soil in the tractor track. For mulch seeding, the tines are suitable to only a limited extent, as they can be prone to clogging in case of a high share of harvest residues.

The track eradicator discs with ondulated discs are absolutely resistant to clogging. Thus, the tracks can be loosened without producing coarse clods even in heavy soils.

Depending on the tractor width, an hydraulic side adjustment can be selected as an option.

- Loosening compacted soil in the tractor track
- Leaves an field without tracks
- Adjustment of the working depth without tools with the well-known clip system
- Optional, hydraulic side adjustment depending on the tractor width



Loosening compacted soil in the tractor track

TurboDisc seed coulters

THE THIRD GENERATION GUARANTEES A HEADSTART IN THE FIELD OF SEED PLACEMENT



- Double disc coulters
- Creates a precise seed furrow
- Press wheel controlled (5 cm or 7.5 cm wide)
- Uniformer prevents the grains from bouncing
- Inside scraper prevents blocking and clogging of the coulters
- Coulter pressure up to 125 kg via rubber torsion
- Designed for precise seed placement at high operational speeds
- Allows for an even and safe emergence

A perfect embedding of the seed and an immediate seed-soil contact are important for a safe and even emergence. HORSCH perfectly copes with the challenge to achieve this objective even at high operational speeds. The solution is called TurboDisc. The double disc coulters that have been used and constantly developed further by HORSCH for more than 20 years excel due to their precise seed placement. The press wheel-controlled coulters design allows for a quick following of the soil contours at high speeds. Thus, the set placement depth can be kept up for every single grain.

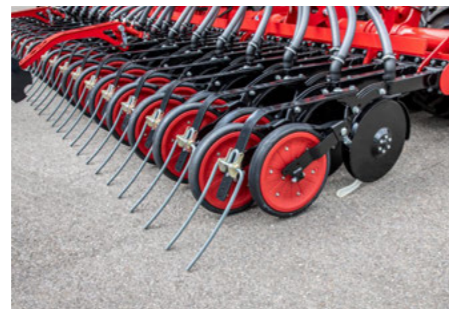
The double disc seed coulters with maintenance-free bearings open the soil, allowing for undisturbed seed placement. The integrated Uniformer ensures the fixing of the seed at the bottom of the seed furrow even at very high operational

speeds. A carbide coated scraper keeps the space between the discs clean and thus prevents clogging even in sticky and wet conditions. The 5 cm or 7.5 cm wide press wheel then ensures an optimum seed-soil contact and an exact depth control.

In addition to the excellent contour following, the TurboDisc seed bar excels due to the easy operation: with regard to their adjustment, coulters pressure and seed depth do not influence each other. The maintenance-free rubber bearings of the seed coulters transfer a coulters pressure of up to 125 kg and thus guarantee a smooth coulters – up to an operational speed of 20 km/h. Furthermore, the rubber bearing serves as an overload protection and a shock absorber for stones.



Fall tube position in front of the mounting and moving inside scraper prevent blockage of the coulters in wet sowing conditions



HORSCH TurboDisc seed coulters



The movable scraper ensures a high self-cleaning effect in wet conditions

PowerDisc seed coulters



PowerDisc seed coulters – parallel-controlled double disc coulters

The new HORSCH PowerDisc coulters are ideal for difficult conditions and with coulters pressures of up to 200 kg per individual row ensure a safe seed placement even in a coarse seedbed. The large bearings and its design ensure a high and durable stability. The experiences from the Maestro single grain technology were included in the design.

- Parallel-controlled double disc coulters
- Coulter pressure up to 200 kg is possible
- Ideal for difficult conditions
- Long service life due to massive components



Coulters pressure up to 200 kg is possible



The HORSCH Uniformer ensures a precise fixing of the seed

Electric half-width shut-off

The mechanical half-width shut-off is standard equipment for all machines. As an option you can choose an electrical half-width shut-off via the ISOBUS Terminal. With a SectionControl activation, the whole system can be automated.

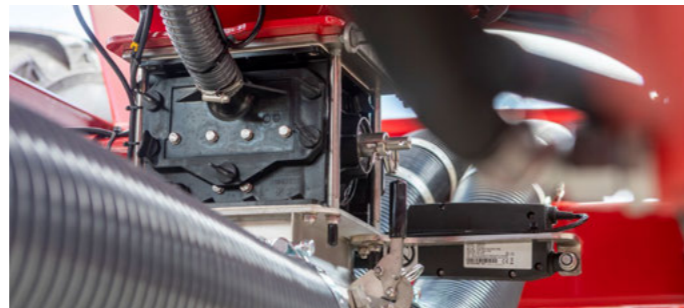
Due to the SectionControl options, fertiliser and seed can be saved. Avoiding overlaps on the headlands, on wedges or obstacles improves the development of the individual plant and reduces the disease and competitive pressure in these areas

Avoiding overlapping reduces the required seed quantity and prevents over-fertilisation on the headlands and in wedges. Thus, the farmer can save costs quite easily .

- Standard with mechanical half-width shut-off
- As an option, an electrical half-width control via the ISOBUS Terminal can be chosen
- Process can be automated by activating SectionControl



Mechanic half-width shut-off as standard



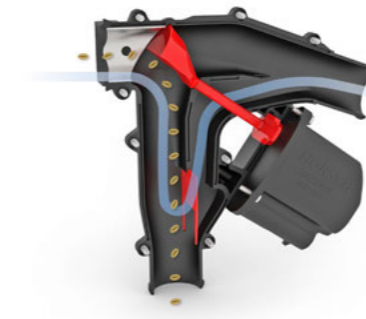
Automated electric half-width shut-off via SectionControl activation is possible

RowControl distribution tower

- Possibility of individual row switch-off to the last row
- Freely selectable tramlines
- Optimum solution for different tramline rhythms in the contracting sector
- Freely adjustable row spacings
- High savings on resources due to precise switching-off of the seed rows on the headlands and in case of obstacles



RowControl flap open: seed is transported to the coulter



RowControl flap closed: excess air escapes via the coulter, the seed is transported to the injector and supplied again to the distributor tower – no lateral distribution losses



RowControl distribution tower

Microgranular compound unit

The microgranular unit of the Serto SC increases the hopper variety of the machine. The capacity of 390 l for microgranular compound allows for the simultaneous, precise application of 3 components via the seed coulters of the Serto. The additional capacity increases efficiency and reduces filling stops.

- Possibility to take along 3 components at the same time and to meter them independently
- Easy and safe application of microgranular compounds
- Increases efficiency



The microgranular unit allows for simultaneously transporting and independently metering 3 components



Optional microgranular unit for the easy and safe application of microgranular compounds

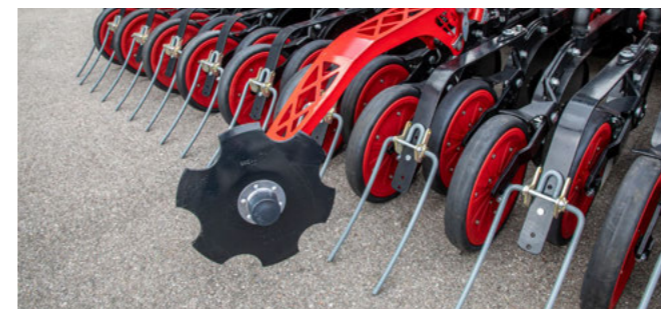


Increases efficiency by a capacity of 390

Pre-emergence marker

The pre-emergence markers are recommended for crops that require maintenance measures before the laid tramlines become visible. They are controlled fully automatically via the tramline rhythm of the terminal. The mounting on the seed coulter allows for a precise depth control via the press wheel. The aggressiveness of the pre-emergence marker is adjusted via a depth stop.

- Fully automatic control via the tramline rhythm
- The aggressiveness of the pre-emergence marker is adjusted via a depth stop.
- Mounted directly on the seed coulter, precise depth control via the press wheel
- Easy activation and deactivation of the pre-emergence marker via ISOBUS



The aggressiveness of the pre-emergence marker is adjusted via a depth stop



Easy activation and deactivation of the pre-emergence marker via ISOBUS

INTELLIGENCE

eosT10/eosT10 Pro

- High-resolution 10" terminal for controlling all ISOBUS devices according to ISO 11783
- Reliable and powerful: high-performance hardware combined with intuitive, user-friendly operation in day or night mode
- Various layout options allow for a simultaneous display of several applications – for an optimum overview
- Straightforward transfer of application maps with the wireless task data exchange
- A real-time transmission of the terminal display via Remote Support facilitates the technical support.



By displaying up to 3 widgets in addition to the main working screen, the user can keep track of several applications at the same time.

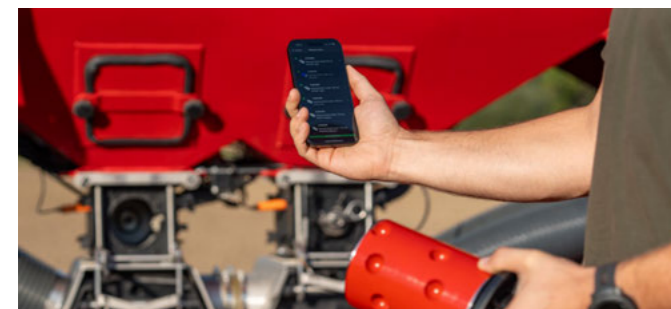
Rotor selection

- Facilitates the selection of the optimum rotor for any application
- Wide selection range from normal seed to fine seed to fertiliser and microgranular compound
- Expert mode to carry out rotor configurations also for variable operating speeds and application rates



AutoLine

- Automatic, GPS-based tramline control
- Optimised driving strategy near obstacles or on the headlands
- Track-to-track driving is no longer required
- Available in combination with the eosT10 Pro terminal or other tramline-capable ISOBUS terminals



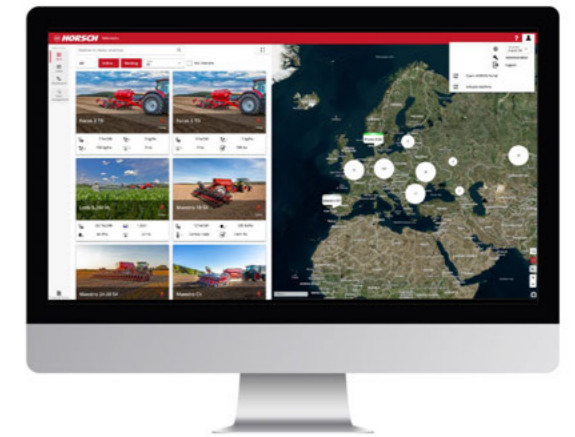
The HORSCH Assist app with the „Rotor Selection“ function helps you to choose the optimal rotor for each application.



Drill independently of the track rhythm with universal seeding technology and HORSCH AutoLine

HorschConnect

Prepare today for tomorrow. Easily control various machine functions via the HORSCH Control app – your smartphone complements the terminal! Gain comprehensive, transparent insight into work rate and work quality with HorschConnect Telematics.

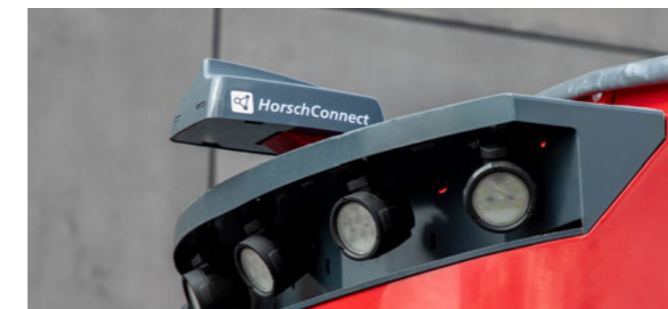


With HorschConnect, telemetry solutions are making their way into the sectors seeding and crop care - exactly where they make sense

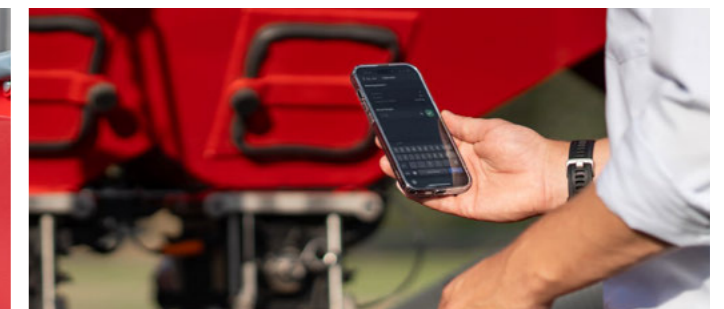
- HorschConnect Telematics to document the performance of the machine
- HorschConnect Telematics for complete transparency of the working quality, e.g. the application rate of all components
- Targeted and proactive service by remote access to error messages
- Control of machine functions via the smartphone app HORSCH Control: e.g. Calibration of all metering devices



The HORSCH Control app allows for controlling individual machine functions - comfortably with a smartphone



Straightforward out-of-the-box solution with a wide range of integrated interfaces



Quick and easy calibration of the machine via smartphone with the HORSCH Control app

TECHNICAL DATA

Serto SC	10 SC	12 SC	13 SC	13.5 SC
Working width (m)	10,00	12,00	13,36	13,50
Transport width (m)	3,00	3,00	3,00	3,00
Transport height (m)	4,00	4,00	4,00	4,00
Length (m)	8,45	8,45	8,45	8,45
Axle load (kg)	9200 - 9650	9600 - 10000	11000	11000
Vertical load (kg)	1400 - 1900	2000 - 2800	2800 - 3000	2800 - 3000
Hopper capacity double hopper (l)	6000 (60 : 40)	6000 (60 : 40)	6000 (60 : 40)	6000 (60 : 40)
Filling height double hopper (m)	2,55	2,55	2,55	2,55
Feed opening double hopper (m)	1,68 x 0,66	1,68 x 0,66	1,68 x 0,66	1,68 x 0,66
Number of seed coulters TurboDisc III	66 - 80	80 - 96	---	---
Coulter pressure seed coulters TurboDisc (kg)	15 - 125	15 - 125	---	---
Row spacing/TurboDisc (cm)	12,50 / 15,00	12,50 / 15,00	---	---
Number of seed coulters PowerDisc	60	48 - 72	80	80
Coulter pressure PowerDisc seed coulters (kg)	50 - 200	50 - 200	50 - 200	50 - 200
Row spacing/PowerDisc (cm)	16,70	16,70 / 25,00	16,70	16,70 / 20,00
Tyre packer size	7.50 - 15 AS	7.50 - 15 AS (320/65 - 16 with 25 cm row spacing)	7.50 - 15 AS	7.50 - 15 AS
Tyre packer Ø (cm)	78	78	78	78
Number of packer tyres (Piece)	30 - 33 - 40	24 - 36 - 40	40	40
Tyres seed drill	650 / 55 - 26.5	650 / 55 - 26.5	650 / 55 - 26.5	650 / 55 - 26.5
Operational speed (km/h)	10 - 20	10 - 20	10 - 20	10 - 20
Horsepower requirement (kW/hp)	200 / 272	220 / 300	220 / 300	220 / 300
DA control devices	1 (Lifting & folding) +1 (hydraulic fan & hydraulic coulter pressure)	1 (Lifting & folding) +1 (hydraulic fan & hydraulic coulter pressure)	1 (Lifting & folding) +1 (hydraulic fan & hydraulic coulter pressure)	1 (Lifting & folding) +1 (hydraulic fan & hydraulic coulter pressure)
Depressurised return flow (max. 5 bar)	1	1	1	1
Oil quantity hydraulic fan (l/min)	mind. 60	mind. 60	mind. 60	mind. 60
Implement attachment adjustable drawbar ring hitch (mm)	Cat. IV - Ø 58 or Cat. V - Ø 79	Cat. IV - Ø 58 or Cat. V - Ø 79	Cat. IV - Ø 58 or Cat. V - Ø 79	Cat. IV - Ø 58 or Cat. V - Ø 79
Implement attachment ball head	K 80	K 80	K 80	K 80





Your distributor



HORSCH Maschinen SE & Co. KG

Sitzenhof 1 · 92421 Schwandorf

Phone: +49 9431 7143-0

Fax: +49 9431 7143-9200

E-Mail: info@horsch.com

horsch.com

Paper: 120 g/qm Maxi Offset. The paper is certified according to the EU Ecolabel. This label is only granted for products and services whose environmental consequences are considerably lower than those of comparable products. For more details see www.eu-ecolabel.de. Printing ink: Printing ink QUICKFAST COFREE. Free from mineral oil and cobalt. Moreover, it is certified and recommended for printing according to the „Cradle-to-Cradle“ principle (quasi “from the origin back to the origin”) – an approach that deals with the spreading of continuous and consequent recycling management. More details at www.c2c-ev.de.

All specifications and diagrams are approximate and not binding. Technical features and design are subject to change.

EN-60208814 (2025)